

Situations *Unique* Solutions

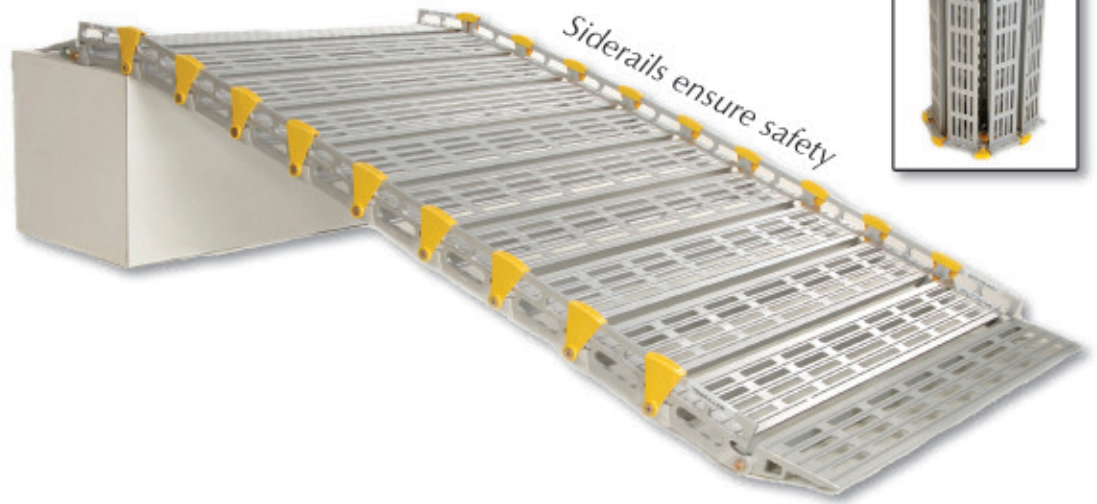


ROLL-A-RAMP

Where Strength and Flexibility Meet



Industry Awards



- ▼ **Strength** - 6061-rated Aircraft Aluminum supports up to 2,000 lbs.
- ▼ **Lightweight** - Aluminum construction is lightweight: 8' section weighs just 45 lbs.
- ▼ Quickly change length by adding and subtracting links.
- ▼ Unlimited length.

Modular Systems



Powered MiniFold™ Ramp



159 8th Ave NW • West Fargo, ND 58078

701-277-9471 • Toll Free: 866-883-4722

sales@rollaramp.com

www.rollaramp.com

28820brochure.indd Ppt: Sherena Created: 6/19/08, 8:20 AM By: Adobe InDesign CS3 (5.0.2) 2800.0.001 (Screened Data File PGB, Nroog-Reading, Color-Step, Std-OPP) [TRAP ABO:100 Scaling Percent: 100 MD 144 ---.luc) C:1500015 M:1500875 Y:15000 R:1500845 PANTONE 8181 CV:1500015 J bleed: 0.125 margin size: 0.375 Color Management: 10/11/08 Black ID: Sherena 1

Roll-A-Ramp® Product Line

In every case the Roll-A-Ramp® remains a portable system regardless of the configuration; and there are never any structural modifications or building permits needed to install a Roll-A-Ramp® system.

12" Roll-A-Ramp®

Twin Track Pair

supports up to 2,000 lbs.

Lengths start at 3 ft. and are configured to any length needed.

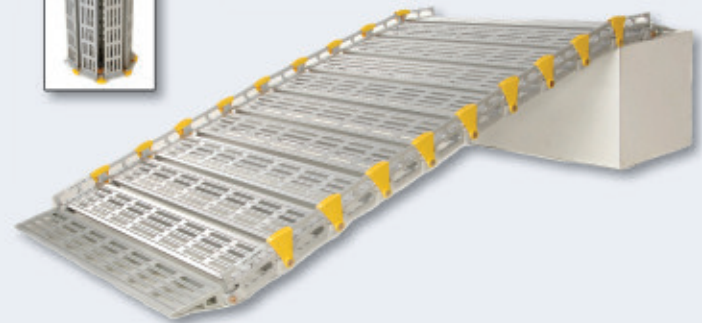


26", 30" & 36"

Roll-A-Ramp®

supports up to 1,000 lbs.

Lengths start at 3 ft. and are configured to any length needed.



Bi-Fold Vehicle Systems

Powered



Minifold™ 6' x 26" Mini Van Model

- #MF1 Corded Remote
- #MF1-R Wireless Remote
- * 29" Door Clearance Required



AutoFold™ 7' x 30" Full Size Van Model

- #AF1 Corded Remote
- #AF1-R Wireless Remote
- * 33" Door Clearance Required



Non-Powered



Manual Bi-folds

- #MF-26 6' x 26"
- * Can be made to different lengths
- #MF-30 8' x 30"
- * Can be made to different lengths
- #MF-36 8' x 36"
- * Can be made to different lengths
- * 28"/32"/38" Door Clearance Required



ALL RAMPS ARE BI-FOLDED FOR VEHICLE MOUNTED APPLICATIONS
Bi-Fold Systems are the same superior quality Roll-A-Ramp® used in a bi-fold fashion.
Compatible for most full size or mini-van applications.

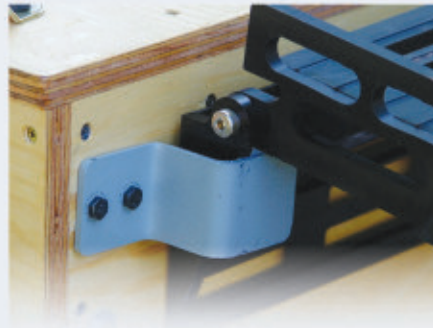
28820brochure.indd For: Sherena Created: 6/19/08, 8:20 AM By: Adobe InDesign CS3 (5.0.2) 2800.0 001 [Screened Data File PGB, Nroog-Reading, Color-Steps, Std-09P] [TRAP ABS:100 Scaling Percent: 100 WD 100 H 100] C:\Users\jshelena\Documents\28820brochure\28820brochure.indd Sherena 1

Accessories



#3250 Positive Lock Pins

Used to separate ramps into shorter sections easy storage. Excellent for removing a short section from a longer modular system for use as a portable ramp.



#3150 Seg Mount Brackets

Use to temporarily secure ramp to landing. Quickly & easily remove ramp when needed. Sold as pair.



#3415 Pickup Tailgate Brackets

Use for temporary mount on flat surface when extra holding power is needed. Simply rivet or screw in place. Aluminum/pair.



#3612-S (short) Support Stand Adjust: 6-11"

#3612-L (long) Support Stand Adjust: 14-27"

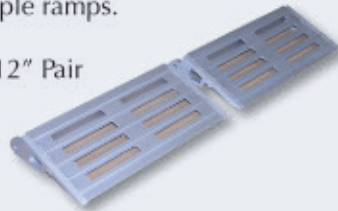
Support stands recommended for ramps over 10 feet in length; also every 8 ft. in longer systems. Makes ramp very rigid. Sold as pair.



Additional Approach Plates

Use extra Approach Plates when you want to separate a ramp to make a complete shorter ramp. Makes Roll-A-Ramp® multiple ramps.

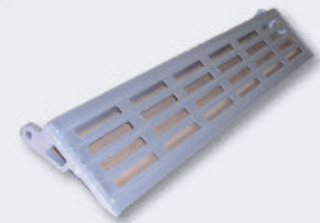
#A45237-12 12" Pair



#A45237-26 26"

#A45237-30 30"

#A45237-36 36"



Vehicle Mount Brackets

Use to mount the Roll-A-Ramp® into the side or rear of vehicles, docks, boats, etc. Good option for delivery vehicles where ramp is easily bi-folded out of vehicle. Ramp also removable when not needed in place. Bi-folds upright when folded.

#3100 30" Step/Step Well Mount

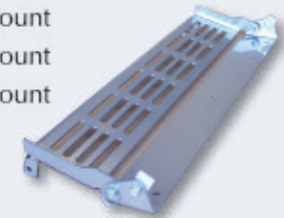
#3136 36" Step/Step Well Mount



#3200 26" Flat Surface Mount

#3300 30" Flat Surface Mount

#3600 36" Flat Surface Mount



#3124 12" Step/Step Well Mount

#3224 12" Pair Flat Surface Mount
(No Mount Bracket)



28820brochure.indd For: Sheena Created: 6/19/08, 8:20 AM By: Adobe InDesign CS3 (5.0.2)
 2800.0 001 (Screened Data File PGB, Nroog-Reading, Color-Step) (TRAP ABS:100 Scaling Percent: 100 MD 144) (C:\150015 M:150875 Y:15090 R:150845 J bleed: 0.125 margin size: 0.375
 Color Management: 19/11/08 Black
 ID: Sheena1

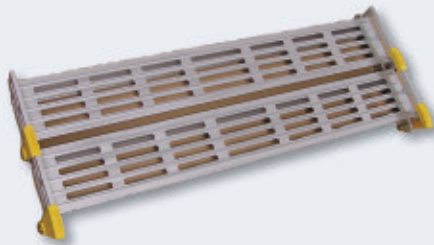
Additional 1 ft Links

Use additional links to lengthen the ramp. Links easily attach with simple tools included. Never have the wrong size ramp. Sold in 1 ft. increments.

#31122 12" Pair



#31262 26"
 #31302 30"
 #31362 36"



Load Bearing Approach Plates

Optional replacement for top Approach Plate. For use when placement of the end of the ramp needs to be on the landing surface. Maximizes usable ramp length.

#3212 12" Pair



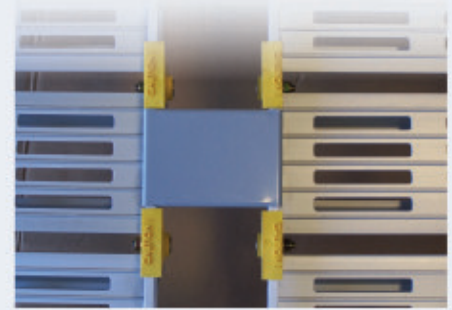
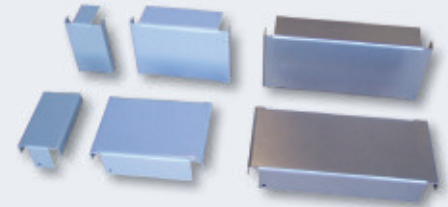
#3226 26"
 #3230 30"
 #3236 36"



Spacers for 12" Ramp Pair

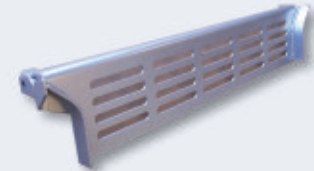
Use with the 12" pair of ramps to help keep spacing equal between top and bottom ends of ramp. Sold as each.

#3320 2" Spacer
 #3350 5" Spacer
 #3380 8" Spacer



#3220 30" to 26" Reducer Plate

Use this Load Bearing Approach Plate on a 30" ramp to fit 26" opening.



Modular Systems

Roll-A-Ramp® Modular Ramp Systems are designed for specific needs and requirements. Always remains portable. Quick set-up and take-down.



#4040-x Handrail Assemblies

- High-grade aluminum handrails
- Easily attached and removed if needed, keeping the Roll-A-Ramp® portable.
- Order length needed in even increments

Commercial Uses



- ▼ Contractors
- ▼ AV Market
- ▼ Delivery Vehicles
- ▼ Etc...

159 8th Ave NW • West Fargo, ND 58078
 701-277-9471 • Toll Free: 866-883-4722
 sales@rollaramp.com | www.rollaramp.com



28820brochure.indd For: Sherena Created: 6/19/08, 8:20 AM By: Adobe InDesign CS3 (5.0.2) 2800.0 001 (Screened Data File PGB, Nroog-Reading, Color-Setup) (TRAP ABO:100 Scaling Percent: HT 100 WD 144 H 144) C:\150015 M:\150875 Y:\15090 R:\150945 PANTONE 8181 CV:\150015 J bleed: 0.125 margin size: 0.375 Color Management: 1911109 Black ID: Sherena 1